

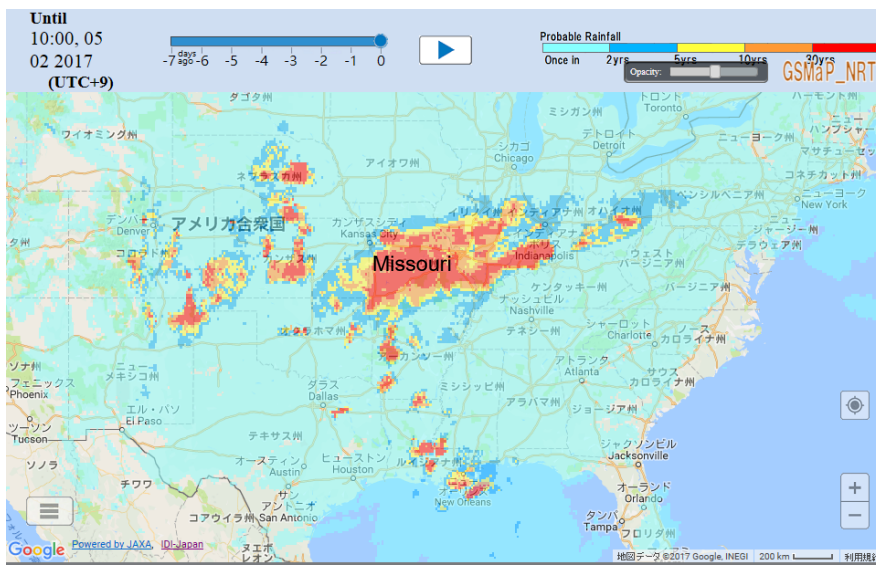
USA (Midwest and South) FLOODS

Country and Districts	USA (Midwest and South) Texas, Arkansas, Missouri, Mississippi, Oklahoma, Alabama, Illinois, etc.	Death	13
Date of Occurrence	April 29, 2017	Missing	no data
Outline	Severe storms slammed South through Midwest with deadly flooding, tornadoes and even snow. Multiple rivers overflowed.		

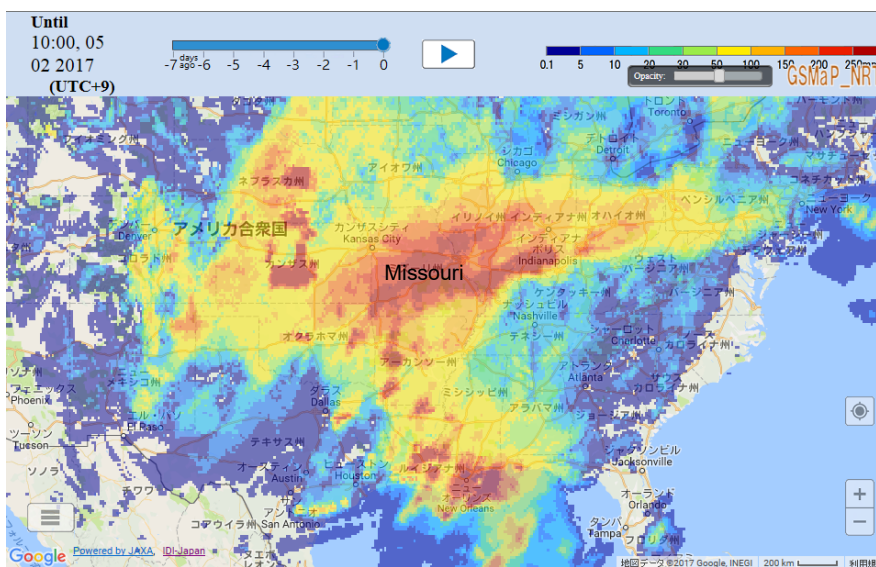
Precipitation Data from GFASII (Global Flood Alert System Ver.2)

GRASII is operated by Infrastructure Development Insutitute-Japan

72 Hours Probable Rainfall (10:00pm, April 28 - 10:00pm, May 1 JST)



72 Hours Accumulated Rainfall (10:00pm, April 28 - 10:00pm, May 1 JST)



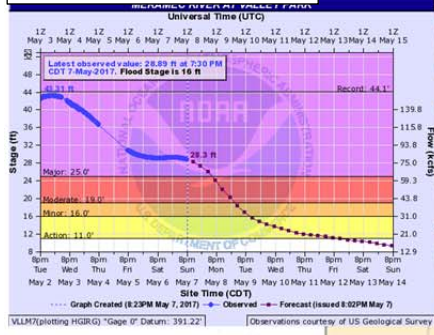
River Levels in Missouri as of May 7, 2017 (USGS)

MISSOURI

NOTE: The following river stations are in Illinois.

- Mississippi River at Chester
- Mississippi River at Thebes

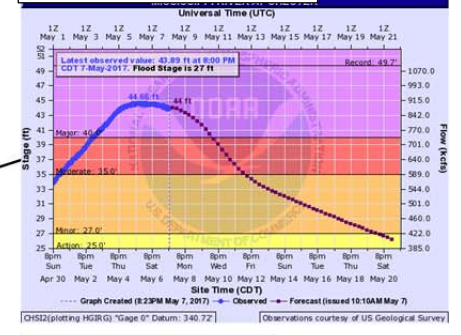
Meramec River at Valley Park



Mississippi River at St. Louis



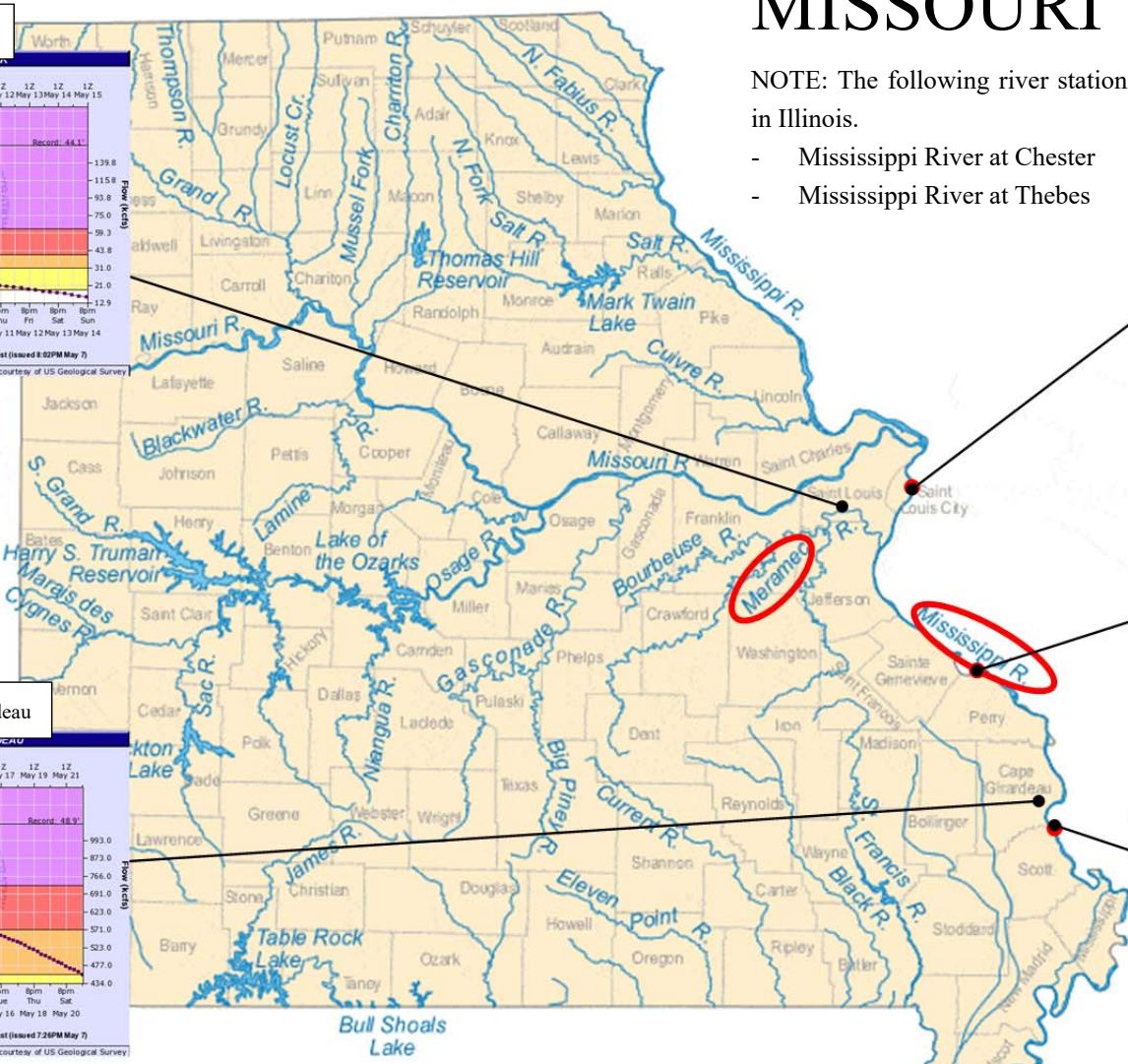
Mississippi River at Chester



Mississippi River at Thebes



Mississippi River at Cape Girardeau



Sources:
<https://waterwatch.usgs.gov/new/index.php?r=mo&id=flood-table>
<http://geology.com/lakes-rivers-water/missouri.shtml>

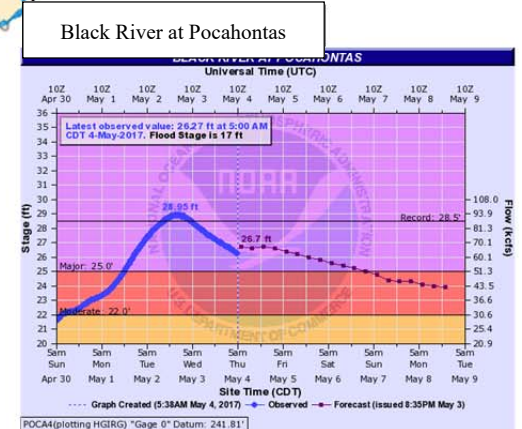
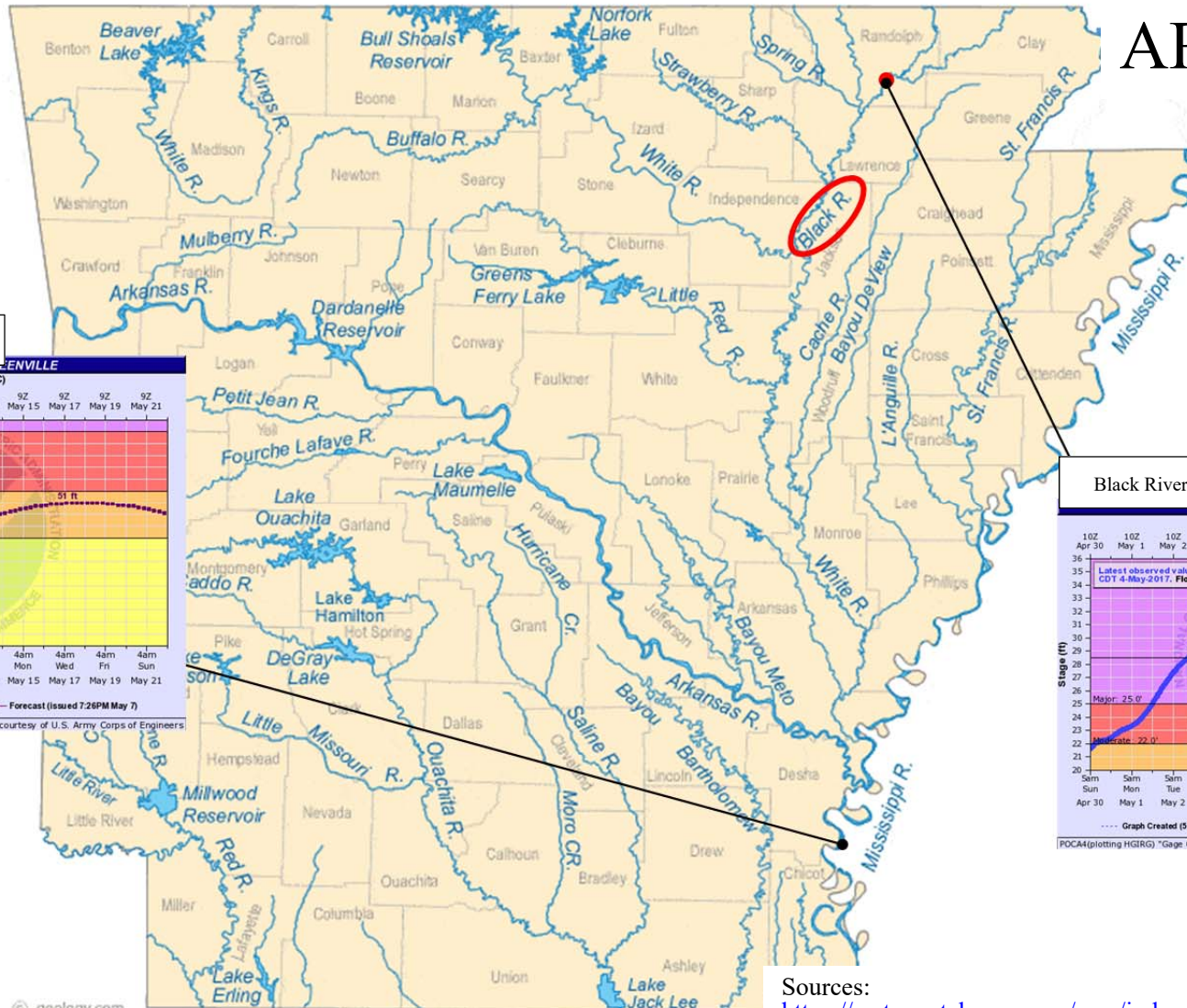
© geology.com



一般社団法人 国際建設技術協会
 Infrastructure Development Institute - Japan

River Levels in Arkansas as of May 4, 2017 (USGS)

ARKANSAS



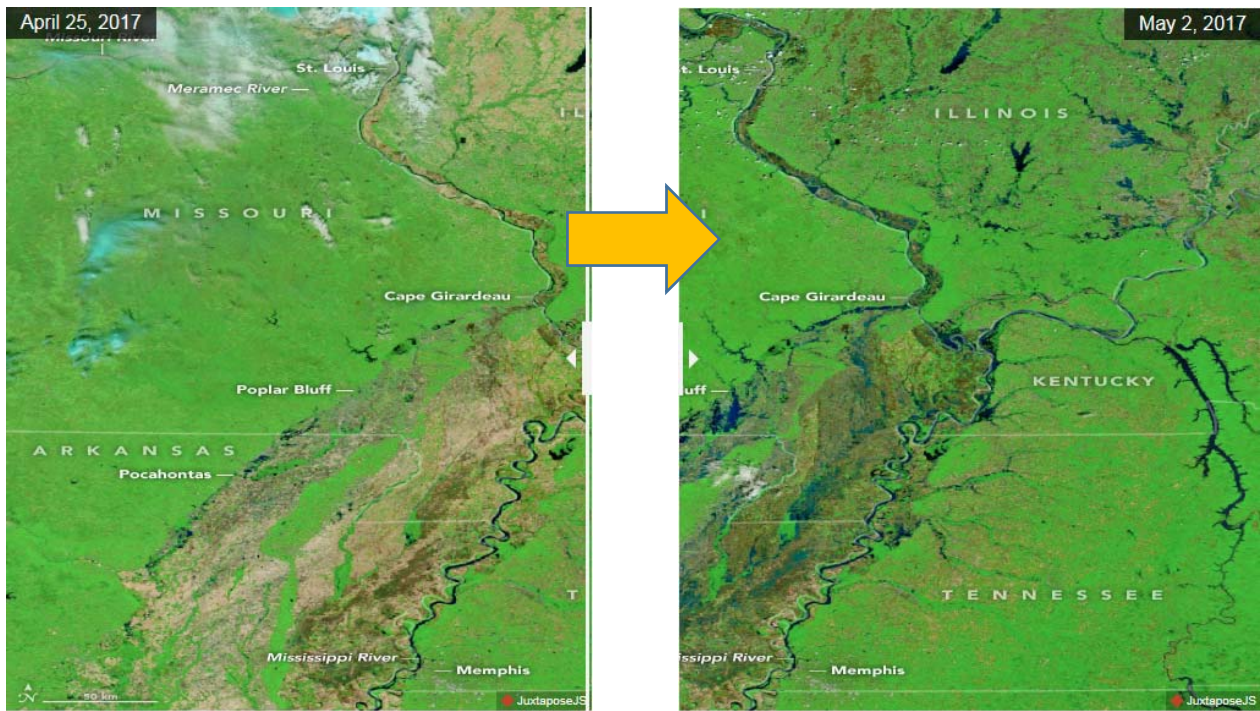
Sources:
<https://waterwatch.usgs.gov/new/index.php?r=ar&id=flood-table>
<http://water.weather.gov/ahps2/hydrograph.php?wfo=lzk&gage=poca4>



Before and After Satellite images from Mississippi River at Cape Girardo to Pochahongas (NASA)

BEFORE

AFTER



Source: <https://earthobservatory.nasa.gov/IOTD/view.php?id=90171>

